

*Status*<sup>®</sup>  
G R A P H I T E

---

BASSES • PICKUPS • CIRCUITS

---

---

MY MAIN OBJECTIVE AT STATUS GRAPHITE BASSES IS  
TO PRODUCE THE FINEST INSTRUMENTS, USING THE HIGHEST  
QUALITY MATERIALS AVAILABLE.

---

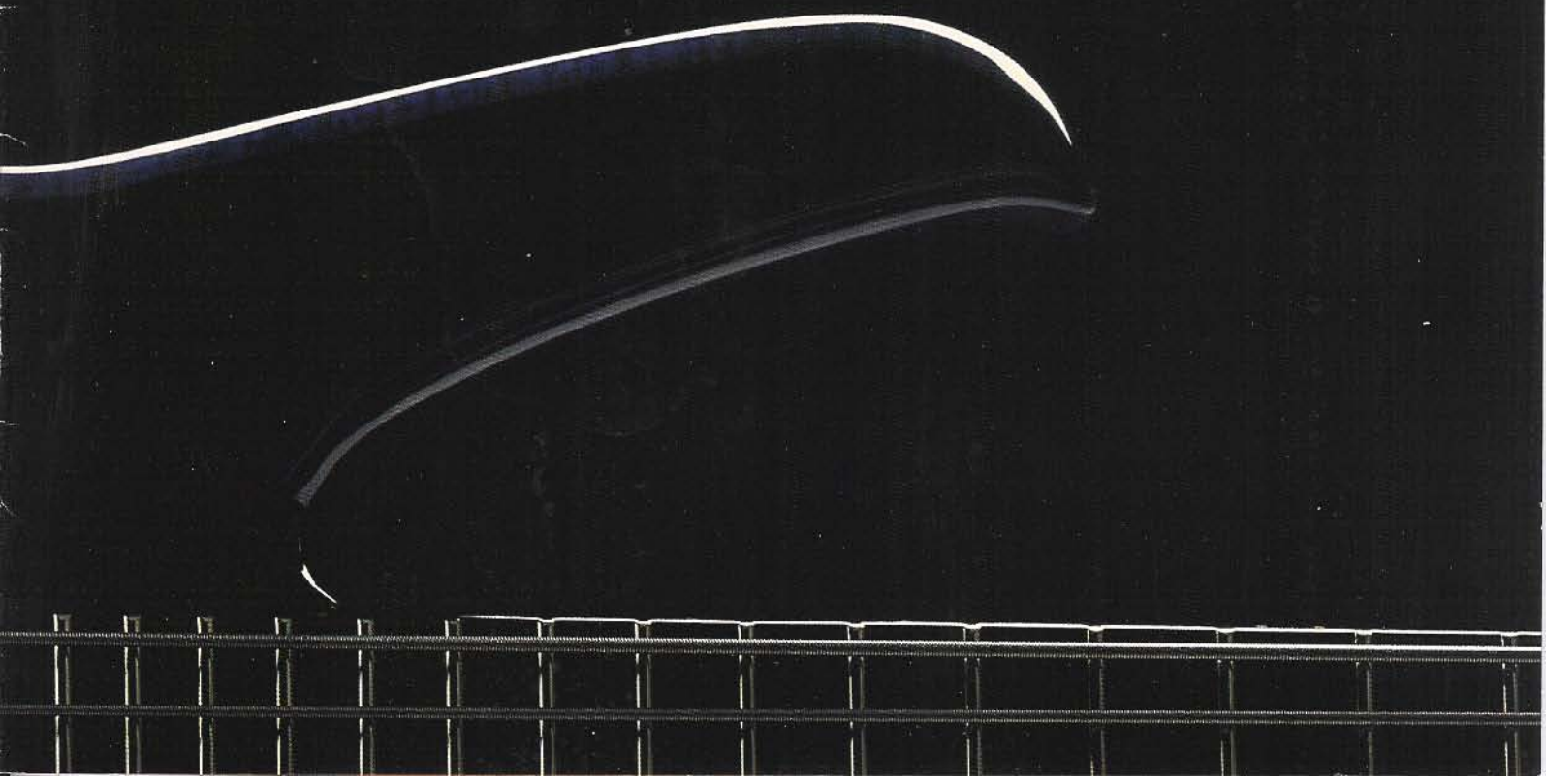
ALL BASSES USE WOVEN GRAPHITE TECHNOLOGY IN THEIR  
CONSTRUCTION - A COSTLY AND HIGHLY LABOUR INTENSIVE  
MATERIAL TO PROCESS, BUT REWARDING IN IT'S CLEAN, WIDE  
FREQUENCY RESPONSE AND TREMENDOUS SUSTAIN.

---

THE COMBINATION OF CARBON GRAPHITE, EXOTIC  
HARDWOODS AND HYPERACTIVE™ ELECTRONICS HAS  
DEVELOPED INTO A SPECIALIST RANGE OF BASS PRODUCTS  
SECOND TO NONE.

---

*Bob Allen*



SINCE ITS CONCEPTION NEARLY NINE YEARS AGO, THE THINKING BEHIND THE **SERIES II STATUS BASS** HAS REMAINED VIRTUALLY UNCHANGED. AN INSTRUMENT WHICH HAS ALL THE BEAUTY OF RARE AND EXOTIC WOODS COMBINED WITH THE SOUND, QUALITY AND FEEL OF **CARBON GRAPHITE**.



FIGURED WALNUT/AMERICAN CHERRY



RIPPLED ASH/AMERICAN CHERRY



BIRDSEYE MAPLE (RED TINT) AMERICAN WALNUT/BLACKHARDWARE

#### SPECIFICATIONS

- GRAPHITE COMPOSITE MOULDED THROUGH-NECK
- EXOTIC HARDWOOD TRI-LAMINATE BODY WINGS
- HIGH OUTPUT/LOW NOISE CIRCUITRY
- TREBLE:  $\pm$  20dB AT 8KHz
- BASS:  $\pm$  17dB AT 100Hz
- STATUS HYPERACTIVE™ PICKUPS
- SOLID BRASS HARDWARE - GOLD LACQUERED
- DOUBLE-OCTAVE PHENOLIC FINGERBOARD
- FLIGHT CASE INCLUDED

#### OPTIONS

- BLACK LACQUERED HARDWARE
- EXOTIC WOOD FINGERBOARD
- FRETLESS/LINED/HALF FRETTED-HALF FRETLESS
- FOUR AND FIVE STRINGS
- TRANSPARENT COLOURED TINTS



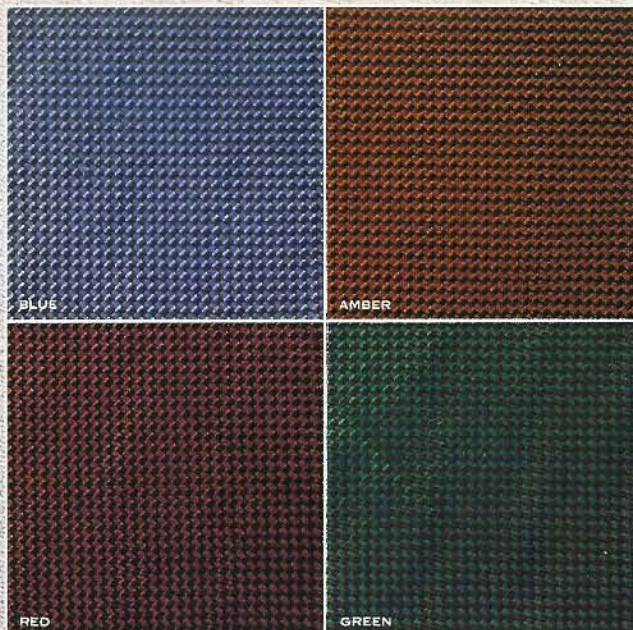
FIGURED BUBINGA/AMERICAN WALNUT

# SERIES - II



FIGURED MAPLE/AMERICAN  
CHERRY | BLUE TINT | 5 STRING

FAVIERA | AMERICAN CHERRY



THE **SERIES 2000** HAS RECENTLY UNDERGONE CONSIDERABLE MODIFICATION. BEING A ONE PIECE GRAPHITE MOULDING THE FREQUENCY SPECTRUM AVAILABLE IS WIDER THAN THAT FOUND ON ANY OTHER INSTRUMENT. MUCH EFFORT HAS BEEN FOCUSED ON EXPANDING THIS RESPONSE THROUGH BOTH PICKUPS AND CIRCUITRY.

#### SPECIFICATIONS

- ONE PIECE GRAPHITE COMPOSITE MOULDING
- HIGH OUTPUT/LOW NOISE CIRCUITRY
- TREBLE:  $\pm 18\text{dB}$  AT  $12\text{KHz}$
- BASS:  $\pm 13\text{dB}$  AT  $30\text{Hz}$
- STATUS HYPERACTIVE™ H.R. (HIGH RESOLUTION) PICKUPS
- SOLID BRASS HARDWARE
- DOUBLE-OCTAVE PHENOLIC FINGERBOARD
- FLIGHT CASE INCLUDED

#### OPTIONS

- FOUR TRANSPARENT COLOURS (RED, AMBER, BLUE, GREEN)
- FRETLESS/LINED/HALF FRETTED
- HALF FRETLESS
- EXOTIC WOOD FINGERBOARDS
- BLACK LACQUERED HARDWARE



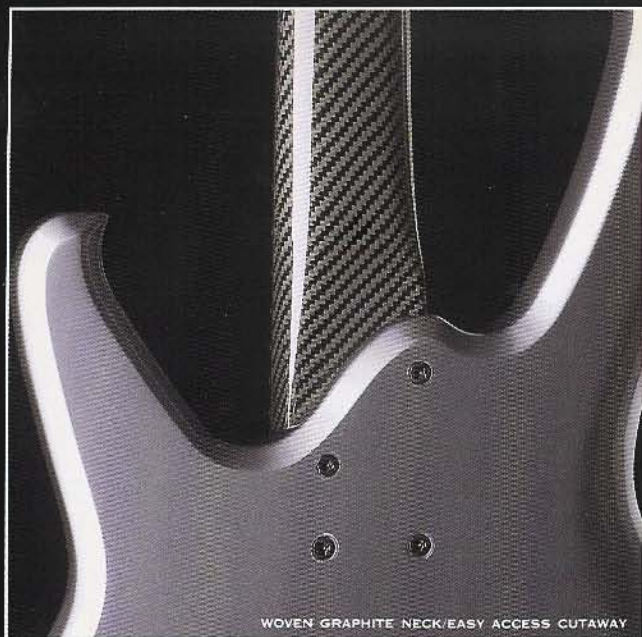
OPTIONAL BLACK HARDWARE

# SERIES-2000



OPTIONAL RED TINT

NATURAL GRAPHITE



WOVEN GRAPHITE NECK/EASY ACCESS CUTAWAY

THE **SERIES 4000** IS A MAJOR NEW DEVELOPMENT IN **BASS TECHNOLOGY**. A **WOVEN GRAPHITE NECK** IS BOLTED ON TO A **RESIN COMPOSITE MOULDED BODY**. BEING A **MOULDING**, THE **WEIGHT, BALANCE AND SOUND QUALITY** REMAIN CONSISTANT FROM ONE BASS TO ANOTHER. THE **BODY HAS A GREATLY STIFFENED CENTRE SECTION** TO HELP TRANSMIT THE **BROADEST POSSIBLE FREQUENCY SPECTRUM**. ALL THIS COMBINES TO PRODUCE A SOUND THAT IS **FULL YET REMARKABLY CLEAR**.

#### SPECIFICATIONS

- **WOVEN GRAPHITE COMPOSITE NECK**
- **RESIN COMPOSITE MOULDED BODY**
- **HIGH OUTPUT PRE-SET EQ CIRCUIT**
- **TREBLE: +20dB AT 10KHz**
- **BASS: +18dB AT 40Hz**
- **STATUS HYPERACTIVE™ 'J' TYPE PICKUPS**
- **DOUBLE-OCTAVE PHENOLIC FINGERBOARD**
- **SOLID BRASS HARDWARE - GOLD LACQUER**
- **SEMI-FLIGHT CASE INCLUDED**

#### OPTIONS:

**NINE HIGH GLOSS COLOURS** IVORY WHITE, BLOOD RED, SHARP BLACK, BANANA YELLOW, CHAMPAGNE, RED MIST, SILVER GREY, PEARL WHITE, ELECTRIC BLUE  
**EXOTIC WOOD FINGERBOARDS**  
**FRETLESS/LINED/HALF-FRETTED-HALF FRETLESS**  
**BLACK LACQUERED HARDWARE**



SERIES - 4000



Status  
GRAPHITE

MADE IN ENGLAND



---

## ACTIVE

---

EACH PICKUP HAS AN IN-BUILT ACTIVE TONE CIRCUIT TO PRE-SHAPE THE SOUND.

---

THIS CREATES A HIGH POWER/LOW IMPEDANCE OUTPUT WITH A WIDER FREQUENCY RESPONSE THAN ANY CONVENTIONAL PICKUP. MORE POWER, MORE HIGHS, MORE LOWS.

---

## PASSIVE

---

ALTHOUGH PASSIVE, THESE PICKUPS WILL HAVE A HIGH OUTPUT AND WIDE FREQUENCY RESPONSE.

---

## OPTIONS

---

DIRECT REPLACEMENT 'P', 'J' (NECK), 'J' (BRIDGE) PICKUPS ARE AVAILABLE. ALL EITHER ACTIVE OR PASSIVE. ALL FULLY SCREENED AND HUM-CANCELLING.

---

---

## CIRCUITRY

---

**SINGLE PICKUP - STATUS** MASTER VOLUME/MASTER TONE. THE TONE CONTROL WORKS ON SELECTED HIGH FREQUENCIES WITHOUT AFFECTING THE OVERALL SOUND.

---

**TWIN PICKUP - THE UNIQUE PICKUP BLEND CONTROL** IS AT THE HEART OF THE TWIN PICKUP CIRCUIT. IT ALLOWS YOU TO SELECT THE BALANCE BETWEEN PICKUPS WHILE INDEPENDENTLY ADJUSTING THE OVERALL VOLUME.

---

ALL PICKUPS AND CIRCUITS SOLD INDIVIDUALLY.

---



HYPERACTIVE™ PICKUPS



*Status*  
GRAPHITE

